

LURIWARE (PTY) LTD CONSULTING AGRICULTURAL ENGINEERS

COMPANY PROFILE



CESA

Consulting Engineers South Africa

LURIWARE (PTY) LTD CONSULTING AGRICULTURAL ENGINEERS
Changing the faces of structures in agriculture. . .

1058

- 1 -

CU 2014014A



Contents...

This company profile has been broken down into the following sections:

| Description | Page Number |
|------------------------------|--------------------|
| Introduction ----- | 3 |
| Vision ----- | 3 |
| Mission Statement ----- | 3 |
| Services ----- | 4 |
| Ownership & Management ----- | 4 |
| Approach ----- | 5 |
| Experience ----- | 5 |
| Resources ----- | 9 |
| Contact Us ----- | 11 |
| Conclusion ----- | 11 |

| Annexure | Page Number |
|---|--------------------|
| A Shareholding ----- | 12 |
| B Professional Affiliations ----- | 13 |
| C Professional Mentorship for Engineers | 13 |
| D Project / Employment References ----- | 14 |
| E Banking Details ----- | 15 |
| F Community Development Activities----- | 16 |
| G Design Showcase ----- | 17 |



Introduction

Luriware (Pty) Ltd is a Consulting Agricultural Engineers registered under E.C.S.A **CU2014014A** and C.E.S.A. **(1058)** specifically to deal with Agricultural Engineering planning, designing and development projects with the motto “changing the faces of structures in agriculture” whilst adhering to engineering standards.

Luriware (Pty) Ltd was established in 2012 as a Project and Programme Management, and Cost Consulting practise in structures and livestock environments, however due to the changing agricultural environment and the growing needs of our Clients (mostly in rural communities); it became necessary to broaden the services that could be provided by Luriware, so as to offer multi-disciplinary Agricultural Engineering consulting services under one banner. Luriware has added to our portfolio full-time Geotechnical investigation and Environmental Impact Assessment units for custom-built projects that require those applications.

Luriware has continued to strive towards becoming a complete multi-disciplinary practise offering our Clients the specialist individual attention and solutions required by an ever-changing project environment. Luriware sees teamwork on every project as the key success element and is responsible for creating this environment. The over-all project manager is duty-bound in ensuring efficient and regular communication to all stakeholders and at all levels.

Luriware believes in a hands-on approach on all projects. That is why a Director of the firm will always be in control of the key functions on our projects as the Chief Engineer. Luriware is equipped with the latest technology and has the necessary staff and resources to ensure the best professional service is provided at all times. The firm is backed up by up-to-date Professional Indemnity Insurance, which can be extended to cover risk on any size project the firm undertakes both locally and abroad.

Vision

Our vision is to grow our multi-disciplinary team in order to offer a broad spectrum of specialist Agricultural Engineering Consulting services to become our Clients' preferred Professional Service Provider (PSP) choice through excellence and efficiency in all aspects of the project life cycle. Whether it is a building project, engineering project, implementation of a project management system, or programme management of a multi-faceted initiative, Luriware is a leading practice that will exceed expectations and set new standards!

Mission Statement

Our Mission is to offer excellent service in each of our professional disciplines, in accordance with statutory practices, codes of conduct and integrity, thereby



LURIWARE (PTY) LTD CONSULTING AGRICULTURAL ENGINEERS
Changing the faces of structures in agriculture. . .

1058

- 3 -

CU 2014014A



developing our team and providing a leading platform from which to service the Agricultural Engineering spectrum and in particular, our valued Clients.

Services

Being a multi-disciplinary consultancy in Agricultural Engineering, Luriware offers a wide range of Engineering, Project/Programme Management services.. Our firm focuses on various aspects of Agricultural Engineering projects Infrastructure planning and development namely:

- FARM ASSESMENTS, PLANNING AND DEVELOPMENT
- FEASIBILITY STUDIES AND BUSINESS PLANS
- CANDIDATE ENGINEERS MENTORING & Farmers Technical Mentoring
- AGRIPARKS and AGRI-VILLAGES Planning, Design and Development
- Agricultural Structures & Environments Engineering (Crops & Livestock)
- Irrigation, Hydroponics, Tunnels and Drainage Engineering
- Agricultural Processing and Post Harvesting Facilities
- Structures to support Mechanization Planning and Engineering
- Facilities to support Renewable Energy Engineering.
- Soil and Water Conservation Engineering inclusive of Land Care Projects
- Environmental Impact Assessment (E.I.A) for Infrastructure Projects
- Boreholes Siting, Testing and water development
- Hydrological investigation and analysis
- Geotechnical Investigations for Infrastructure Projects Development
- Forestry and Water resources analysis for projects development
- Project and Programme Management
- Site Supervision and Management
- Contract Administration and Documentation
- Procurement Documentation and Contractual Dispute Support and Advice
- Soil Surveys, Testing and Analysis (Pedoplans)

Ownership & Management

We recognise the social and financial imbalances of our society and seek to apply capacity building and training initiatives to address these areas.

The company is a level 4 B-BBEE contributor with 100% procurement recognition level and is headed by a dynamic, motivated and efficient team currently led by our Director & Chief Engineer, Mr Tendai Justin Mutenje(Pr.Eng) E.C.S.A. Mr Mutenje is assisted by Ms Fortunate Nyemba (Managing Director) and a staff complement inclusive of engineers, engineering geologist, scientists, surveyor, technicians, draftsmen, hydrologist and teams of standby external consultants engaged as per client services demands.



Approach

Luriware sees teamwork on every project as the key success ingredient and are responsible for creating this environment. The overall project manager is duty-bound in ensuring effective communication to all stakeholders and at all levels. Teams are built by combining the strengths of the individual members and refining skills to meet and exceed the Client's expectations.

We also believe in a hands-on approach on all our projects. This is why a Director of the firm will always be in control of the key functions on a project. Luriware is equipped with the latest technology and has the necessary staff and resources to ensure the best professional service is provided at all times.

Experience

Luriware has a combined professional experience of some 30 years among its Principals and Members. Listed below are the projects that the firm has undertaken both directly and as sub-contractors:

| Project | Client | Project Construction Cost and year |
|---|--|---|
| REHOBOTH LIVE Farm Development: Inception Planning, Design and Development of Rehoboth Farm. Mixed Farming (Cattle Feedlot, Vegetable, Horticulture, crop production) Feasibility Study, Business Plan, EIA, Design and Development (TURNKEY) | Rehoboth Live Farm, Potchefstroom Plot No. 69 Wilgeboom, Potchefstroom | Infrastructure cost: R8 million Professional Fees: R800k Projects Status: Current |
| ISDWEDWE Cooperative Farm Development: Inception Planning, Design and Development of ISDWEDWE Delpont Farm 1. 400 Cattle Feedlot Infrastructure 2. Grade C Red Meat Abattoir 3. 200 Small Stock Facility | ISDWEDWE CLOTHING PRIMARY COOPERATIVE, DELPORT, CENTURION, TSHWANE, GAUTENG | Infrastructure cost: R28 million Professional Fees: R3.1Million Projects Status: Current |
| Agisanang 200 Cattle Feedlot: Feedlot Pens for 200 cattle, Cattle specialist areas, medicine stores, Feed and water troughs etc | AGRIDELIGHT Training and Consulting (Implementing Agent: North West Department of Agriculture) | Infrastructure cost: R2 million Professional Fees: R140k Projects Status: Completed |
| Mzinti 500 Cattle Feedlot, Nkomazi Municipality, Mpumalanga Province: Inception, Planning, Designing and Engineering works for Mzinti 500 CATTLE Feedlot, Handling, Sheds, Feed | Department of Rural Development and Land Reform (DRDLR National) | Infrastructure cost: R7.5 million Professional Fees: R650k |



| | | |
|---|--|---|
| storage, Bunker silos, Carcass trench, Lagoons etc, | | Projects Status: COMPLETED |
| Blouberg 500 Cattle Feedlot, Blouberg Municipality, Limpopo Province (GaKibi BILEC Project Inception, Planning, Designing and Engineering works for GA-KIBI 500 CATTLE Feedlot, Handling, Sheds, Feed storage, Bunker silos, Carcass trench, Lagoons etc, GaKibi, Limpopo | Limpopo Department of Agriculture /IDT Limpopo | Infrastructure cost: R4.5 million Projects Status: COMPLETED |
| DIMANI 500 Cattle Feedlot, Venda, Limpopo Province: Inception, Planning, Designing and Engineering works for VENDA DIMANI VILLAGE 500 CATTLE Feedlot, Handling, Sheds, Feed storage, Bunker silos, Carcass trench, Lagoons etc, Dimani Village, Venda, Limpopo | Limpopo Department of Agriculture | Infrastructure cost: R8.5 million Projects Status: COMPLETED |
| JERICHO 500 Cattle Feedlot, MADIBENG Municipality, North West Province: Inception, Planning, Designing and Engineering works for JERICHO VILLAGE 500 CATTLE Feedlot, Handling, Sheds, Feed storage, Bunker silos, Carcass trench, Lagoons etc, JERICHO Village, MADIBENG Municipality, North West Province | Bojanala Platinum District Municipality Technical Services | Infrastructure cost: R8.5 million Projects Status: COMPLETED |
| Mpumalanga Department of Agricultural Provincial Livestock Development projects initiative. Project involved Research, Design and development of Multiple Infrastructure for livestock production throughout the entire province (Four Districts) | Completed (May 2011 - June 2013) | R 12.5 million Projects Status: COMPLETED |
| NKOMAZI Cattle Feedlots FEASIBILITY STUDY, SITE SUITABILITY, PLANNING AND DESIGN WORKS FOR Mpumalanga Department of Agriculture Engineering Input to Feasibility study, site suitability, EIA, Planning, Design, ad construction Supervision | Mpumalanga Department of Agriculture DARDLEA | Projects Status: Current |
| Research, development and implementation of a programme to improve and thereafter maintain standards for agricultural infrastructure and livestock facilities in Gauteng province. | Completed (2009-2010) | R1.55 million |



| | | |
|--|---|---|
| <p>A) Various Agricultural Infrastructure Designs Projects contracts:</p> <ol style="list-style-type: none"> 1. Broiler units(5000,10000 and 20000 units) design 2. Feedlot, handling systems Abattoirs (Red meat and broiler) design 3. Pack house, AgriHub and Fresh Produce Units designs 4. Concrete Grain Silos complex rehabilitation plan 5. Irrigation system designs (Pivots, sprinklers, Hydroponics tunnels and greenhouse and drip projects) 6. Land care projects gully rehabilitation, soil and water conservation works design 7. Terrain planning of civil works 8. Geotechnical investigations for infrastructure development projects 9. E.I.As for infrastructure projects 10. Dairy Projects designs (Infrastructure layout plans for Herringbone and tandem systems) 6 and 12 points 11. Horticultural Tunnels and Greenhouses designs 12. Luscious Agro processing (Fruit processing lines) 13. Piggery production structures (farrow to finish) 20, 30, 50 and 100 sow units complex 14. Farm structures planning and design (Offices, machinery, stores) | <p>North West Department of Agriculture (DARD) Subcontracted by GOBENG Consulting</p> | <p>Infrastructure cost: R45 million</p> <p>Professional Fees: @5% of Infrastructure fees</p> <p>Project Duration: (13/14) (14/15) (15/16)</p> <p>Projects Status: Completed</p> |
| <p>B) Blouberg 500 cattle feedlot design and construction supervision Limpopo Province</p> | <p>Limpopo Department of Agriculture as Researcher ARC-IAE</p> | <p>R5.5 million (08/10) Completed</p> |
| <p>C) Bojanala 500 cattle feedlot design and construction supervision North West Province</p> | <p>Bojanala Platinum District Municipality as Researcher ARC-AE</p> | <p>R6,8 million (10/11) Completed</p> |
| <p>D) Mpumalanga Department of 1. Agricultural Provincial Livestock Development projects initiative 2. Irrigation system development 3. Farm structures rehabilitation plans 4. Maize mills rehabilitation plans</p> | <p>Mpumalanga Department of Agriculture (DARDLA) as Departmental Engineers</p> | <p>R12.5 million (11/13) Completed</p> |



| | | |
|---|---|-----------------------------------|
| 5. AgriHub development plans 6. Water and civil works for farms | | |
| E) DARDLA Nkangala District Dr J.S Moroka Irrigation fields support Infrastructure (Administration and Machinery shed and other support infrastructure) | Mpumalanga Department of Agriculture (DARDLA) as Departmental Engineers | R8.4 million (11/13) Completed |
| F) Development of Farm Structures Standard Plans for Provincial Departments of Agriculture. Project involved research and development of standard plans for farm structures for Free State, Northern Cape, Eastern Cape and Limpopo departments of Agriculture: The plans which were developed includes; <ol style="list-style-type: none"> 1. Beef cattle handling facilities: Sizes - 40,100 and 500, 2. Feed storage units standard: Sizes - 60 and 100m2, 3. Piggery units: Sizes - 20,50 and 100 sow units 4. Dairy cattle systems: Sizes - 4 & 8 point herringbone 5. Broiler units : Sizes - 1000, 2000, 5000 and 10000 units 6. Goat facilities: Sizes - 100 and 200 goats facility | Comprehensive Agricultural Support Programme- Various Provincial Departments of Agriculture: as Researcher for Agricultural Research Council-Institute for Agricultural Engineering | R5.7 million (08/11) Completed |
| G) Design and construction of a Radio Frequency Identification (RFID) Based cattle handling system | As a Researcher for Agricultural Research Council - Engineers | R200k (11/13) Completed |
| H) Feasibility studies and Business Plans preparations | Various Clients | Completed |
| I) GEOTECHNICAL INVESTIGATIONS for Infrastructure Development: LEUPA Fodder stores, MTLOUG 20 Sow, BAKAMOSO 30 Sow, SAVUKA 30 Sow, IKARABELE 100 Sow, TIRAGALO 30 Sow, KGORA PROJECTS (Dairy, Red Meat Abattoir, Poultry Abattoir), MAHIKENG Red Meat Rural Abattoir, Potchefstroom college Packhouse, LUSCIOUS Agroprocessing Plant, Agisanang feedlot, Phelang Ma Africa Archaar Project | DREAD NORTHWEST | R820k (14/15) Completed |



| | | |
|--|--|--|
| <p>J) ENVIRONMENTAL IMPACT ASSESSMENT: EIAs for AGRIHUBS IN Mpumalanga Province IKARABELE 100 Sow piggery project</p> | <p>MEGA MPUMALANGA North West Department of Agriculture (Ikarabele)</p> | <p>ON HOLD (2014/16) ON HOLD</p> |
| <p>K) RECAPITLISATION PROGRAMME FARM ASSESSMENT AND INFRASTRUCTURE DEVELOPMENT PROPOSALS: Spekboodrift Farm Assessment Mpumalanga Province Elandsfontein Farm Assessment and Development, North West Province Schaapskraal Farm Assessment and Development, North West Province</p> | <p>CONSULTANCY PROVIDED TO APPOINTED FARM DEVELOPMENT MENTORS FOR DEPARTMENTS OR RURAL DEVELOPMENT</p> | <p>ONGOING (2014/15) (15/16) (16/17)</p> |
| <p>L) FUNDING PROPOSALS: MECHANISATION FUNDING PROPOSAL</p> | <p>DEPARTMENT OF AGRICULTURE</p> | <p>ON HOLD (2014/15)</p> |
| <p>M) BOREHOLES SIGHTING PROGRAME: NKANGALA District Boreholes Siting Program (105 BOREHOLES)</p> | <p>Mpumalanga Department of Agriculture (DARDLEA) SUB PEROZZ ENGINEERS</p> | <p>Completed (2014/15/16) R1.5Mil</p> |
| <p>N) IRRIGATION DESIGN: Jozini Irrigation Project Design 190 Ha Center Pivot Irrigation</p> | <p>KwaZulu Natal Department of Agriculture Sub INGWETI ENGINEERS</p> | <p>Completed 2015/2016 R180K</p> |
| <p>O) AGRIPARK DESIGN: SPRINGBOKPAN AGRIPARK, NMM District, North West Planning and Design of the Agripark for Springbokpan. Park consist of: The proposed basic components will include; Food Bank, Milling Plant (Starch edibles), Milling Plant (Stock Feeds), Bulk and Bagged Storage facilities, Machinery Shed and stores, Inputs shed/storage of inputs area (inc fertilisers, seeds etc.), Support Infrastructure (Admin area, ablution facility, canteen, recreational area, social amenities, health and clinics, tuck-shop, gym area, Fuel station</p> | <p>North West Department of Agriculture (DARD) Subcontracted by GOBENG Consulting</p> | <p>Infrastructure cost: R51.4 million Professional Fees: R 2.9Mil Project Duration: (15/17) Projects Status: Still ongoing</p> |
| <p>P) SOIL SURVEYS, ESTING AND ANALYSIS(PEDOPLAN): Soil surveys, testing and analysis for Mbaliyezwe Irrigation Project, Jozini, KwaZulu Natal</p> | <p>KwaZulu Natal Department of Agriculture Sub INGWETI ENGINEERS</p> | <p>ONGOING 2015/2016 R380K</p> |



| | | |
|--|--|--|
| <p>Q) FORTUNE 40 FARMS DEVELOPMENT Farms assessment, planning, design and development for Youth Cooperatives, Mpumalanga Department of Agriculture DARDLEA</p> | <p>Mpumalanga Department of Agriculture (DARDLEA) SUB PEROZZ ENGINEERS</p> | <p>ONGOING 2015/2016 Infrastructure Cost R15M Fees R750k</p> |
| <p>R) NKOMAZI FEEDLOTS PROJECTS DEVELOPMENT Comprehensive FEASIBILITY studies, plan, design and develop bid documents for the establishment of the feedlots for Nkomazi Municipality in Ehlanzeni South District of Mpumalanga Province</p> | <p>Mpumalanga Department of Agriculture (DARDLEA) SUB PEROZZ ENGINEERS</p> | <p>ONGOING 2015/2017 Infrastructure Cost R30M Fees R1.5M</p> |
| <p>S) POTCHEFSTROOM REHOBOTH FARM FEEDLOT PROJECTS DEVELOPMENT Comprehensive FEASIBILITY study, Business plan, design and establishment of 500 Cattle feedlot for REHOBOTH LIVE FARM, Potchefstroom, North West Province. TURNKEY</p> | <p>REHOBOTH LIVE FARM EPCM Project</p> | <p>ONGOING 2015/2016 EPCM Budget R8M</p> |
| <p>T) CAPACITY BUILDING AND CANDIDATE ENGINEERS MENTORSHIP PROGRAMME: Project Based Plan-Design Mentorship</p> | <p>KwaZulu Natal Department of Agriculture Sub INGWETI ENGINEERS</p> | <p>ONGOING 2015/2016 R400K</p> |



Resources

Director and Chief Engineer

Tendai Justin Mutenje, Pr. Eng (Agric), MSc. Eng (Agric), MSAIAE, MASABE, E.C.S.A Registered Mentor **CU2014014A**, SAIIE National Councillor

Managing Director and Bookkeeper

Fortunate Nyemba, BBanking, Bookkeeping to Trial Balance Skills Program, IOB, VIP PASTEL, PAYROL, UIF, HR

Technical Team of Consultants

1. **Tendai Justin Mutenje**: Chief Engineer, MScEng, PrEng, ECSA Mentor
2. **Tendai Sawunyama**: PhD Hydro and Engineering Water Consultant
3. **Dr Alois Hungwe**: Soil Survey, Testing and Analysis Consultant, PhD Sc
4. **Fungayi Simbi**: Crop Scientist and Agronomist, MSc, Consultant
5. **Tongesai Muchoza**: Senior Engineer BSc, Agric Eng, MSc,
6. **Wilson Chivenge**: Agribusiness and Economist, MSc,
7. **Blessing Masasi**: Water Engineering, Hydraulics, Sanitation, MSc Eng
8. **Maxwell Ngwenya**: Water Engineering and Irrigation Design, MSc Eng
9. **Allaric Joseph Mabhuza**: Projects Manager
10. **Aaron T Chanetsa**: Engineer BSc Hons Agricultural Engineering
11. **Tinashe Lindel Dirwai**: Engineer BSc Hons Agricultural Engineering
12. **Rebecca Gweshe**: Engineer BSc Hons Agricultural Engineering
13. **Abel Nyanzira**: Irrigation Engineer, BSc Eng
14. **Blessing Hatitye**: Mechanical Engineer
15. **Bernard Madziwa**: Environmental Expert
16. **Hardlee Mbavarira**: Hydrological and Water Specialist
17. **Tafadzwa Dzimbahete**: Engineering Geotechnical Investigation Expert
18. **Isayah Chimedza**: Farm Manager and Agribusiness Manager
19. **Victor T Fichani**: Horticultural, Crops and Irrigation Technician
20. **Joshua Bomba**: Technician
21. **Innocent Nyemba**: Technician
22. **Stewart Nyemba**: Technician
23. **Tonderai Nyamupenza**: Technician
24. **Kudzai Mutenje**: Operations Research Scientist and Training Facilitator
25. **Sandra Nembere**: Projects Administrative Assistant
26. **Lyinah Cheninga**: Office Administrative Assistant
27. **Chido Bianca Gowe**: Projects Officer

Design/Software Platforms

Luriware makes use of the following packages in their design processes:

1. AutoCAD
2. Revit Architecture
3. Revit structures
4. Revit M.E.P
5. Prokon
6. Civil 3D
7. Model MAKER, Irrimaker, Survey Maker



Equipment/Facilities

Luriware has its office in Silverton Pretoria equipped with design facilities. The firm has company vehicle, GPS facilities, cameras, Laptops, Printers and Plotting equipment is equipped to deal with project-related facilities and equipment needed to satisfy the requirements of our Clients at any time.

Support and Specialist Services Input

The firm is equipped to undertake works of geotechnical, soils pedology, hydrological studies, structural, health and safety and/or environmental categories via specialist service providers that the firm has established excellent working relations with. The firm also has accounts with support and administrative organisations, e.g. stationary, Courier Services, Travel Services, etc. which can be made use of via project-related expenses on behalf of clients.



Contact us

Luriware (Pty) Ltd Consulting Agricultural Engineers can be contacted as follows:

Postal Address

P.O. Box 1465
Silverton Post Office
Pretoria
0127

Physical Address

SUITE 202 2nd Floor ABSA Building,
177 De Boulevard Street, Silverton
Pretoria
0127

Contact Numbers

+27 (0) 12 804 6600 +27(0) 12 770 4163 (t)
+27 (0) 86 604 5921 (f)
+27 (0) 71 217 9756 (c)

Email: info@luriware.co.za, engineering@luriware.co.za tendai@luriware.co.za

Web: <http://www.luriware.co.za> <http://www.luriware4.wix.com/luriware>

Conclusion

Luriware is a capable and dedicated multi-disciplinary management consultancy with the correct solution-based approach in meeting and exceeding our Client's expectations.

Our experienced and focussed team are well placed and equipped and contain the correct experience and qualifications to carry out their functions with diligence and skill. It is our vision that Luriware may be of service to all prospective Clients in the Private, Professional and Public sector.

Please direct all enquiries and/or requests for additional information to Luriware on the details provided above and let us provide you with excellent service, proving our motto of "Changing the faces of structures in Agriculture"



ANNEXURE A – SHAREHOLDING

| Name | Competence | % Shares | % Voting | PDI ? | Woman ? |
|-----------------------|-----------------------------|----------|----------|-------|---------|
| Tendai Justin Mutenje | Chief Engineer, Director | 100 | 100 | Yes | No |
| Totals | | 100 | 100 | | |

Summary of credentials

| | | |
|------------------------------------|---|---|
| Legal Entity Name | : | Luriware (Pty) LTD |
| Trading Name | : | Luriware Consulting Agric Engineers |
| SMME Classification | : | Small (http://www.dti.gov.za) |
| B-BBEE ScoreCard | : | Level 4 Contributor |
| Company Registration Number | : | 2012/047395/07 |
| Tax Number | : | 9320764179 |
| VAT Number | : | 4400264893 |
| Compensation Fund Number | : | CA990000891263 BP 2001357203 |
| UIF Number | : | 2225733/0 |
| ECSA CU | : | CU2014014A |
| CESA REGISTRATION NUMBER | : | 1058 |
| PAYE | : | 7790786430 |
| SDL Reference | : | L790786430 |
| UIF Reference | : | U790786430 |

Social Network Availability

LinkedIn:

<https://www.linkedin.com/company/luriware-pty-ltd-consulting>

Facebook:

<https://www.facebook.com/pages/Luriware-Pty-Ltd-Consulting-Agricultural-Engineers/1375320699375860?ref=stream>

Google +:

<https://plus.google.com/110352097001966763176/about>

YouTube:

<https://www.youtube.com/channel/UCe4nwmFGtT4P60DcER976GQ>

Twitter:

<https://twitter.com/LuriwarePtyLtd>

SA Yellow:

http://www.sayellow.com/@2?wr=10&Cli_ReferenceNumber=1,229,263&SD=L_C2747

Website:

www.luriware.co.za and www.luriware4.wix.com/luriware



LURIWARE (PTY) LTD CONSULTING AGRICULTURAL ENGINEERS
Changing the faces of structures in agriculture. . .

1058

- 14 -

CU 2014014A



ANNEXURE B – PROFESSIONAL AFFILIATIONS

| Name / Description | Affiliation | Reference No |
|---|---|-------------------------------|
| Tendai Justin Mutenje (Pr. Eng) ECSA Registered Mentor CU2014014A | Engineering Council of South Africa (ECSA) Pr.Eng | 20130517 CU2014014A |
| Councillor SAIAE 2016-2017 | South African Institute of Agricultural Engineers (SAIAE) Member | 08001 |
| | American Society of Agricultural and Biological Engineers (ASABE) Member | M 1041831 |
| | CONSULTING ENGINEERS OF SOUTH AFRICA CESA | 1058 |

PROFESSIONAL MENTORSHIP PROGRAMME FOR ENGINEERS

| MENTOR | MENTEE COMPANY | Reference No |
|---|--|---------------------|
| LURIWARE (PTY) LTD Tendai Justin Mutenje (Pr. Eng) 20130517 | GOBENG CONSULTING (PTY) LTD PMU North West DREAD | CU2014002A |

| COUNSELLOR | ORGANISATION | PORTFOLIO |
|---|---|---|
| LURIWARE (PTY) LTD Tendai Justin Mutenje (Pr. Eng) 20130517 | SOUTH AFRICA INSTITUTE OF AGRICULTURAL ENGINEERS (SAIAE) | CANDIDATE ENGINEERS, MENTORSHIP AND ECSA PAC Interactions Responsible to council for The Mentorship of Candidate Engineers, Creating a convenient environment for Candidates and Interacting with ECSA PAC Committee |



ANNEXURE C – PROJECT / EMPLOYMENT REFERENCES

| Client | Project | Reference | Tel No |
|---|--|---|--|
| REHOBOTH LIVE CATTLE FEEDLOT FARM Plot No.69 Wilgeboom, Potchefstroom | Farm Planning and Development Cattle Feedlot, Crop production, Horticulture | REHOBOTH LIVE (PTY) LTD Mr Solly Kwenaithe Manager | +27 72 622 8313 Email: oletengk@yahoo.com |
| ISDWEDWE Clothing Primary Cooperative Delport, Gauteng | Farm Planning and Development Cattle Feedlot, Abattoir and Small stock | Mr Lennon Mavuwa Agribusiness Development Manager ISDWEDWE Clothing Primary Cooperative | +27 (0) 11 057 5959 +27 (0) 72 402 8516 Email: lmavuwa@gmail.com |
| GOBENG Consulting: PMU North West Department of Agriculture | Agricultural Infrastructure Projects Inception, Planning and Design | Mr. Odry Beyi (Program Manager: Gobeng Consulting) | +27 (0)61 067 3168 |
| Mpumalanga Department of Agriculture (DARDLA) | Nkangala Projects Inception, Planning and Design | Mr Mahlatse Mamabolo (Engineer: Nkangala) | +27 (0)83 403 6349 |
| Mpumalanga Department of Agriculture (DARDLA) | Engineering and PMU Projects | Mr Marco Scheltens (Director PMU) | +27 (0)83 282 2383 |
| Agricultural Research Council – Institute for Agricultural Engineering Projects (ARC-IAE) | Various Agricultural Infrastructure Design and Implementation Projects | Mr Petrus Britz (Programme Manager: Agricultural Infrastructure and Engineering Structures) | +27 (0)12 842 4311 |
| MOUKHGUMO Holding FARM DEVELOPMENT PROPOSALS and FARM ASSESSMENT | Appointed Mentor North West GVT: ELANDSFONTEIN FARM: BOJANALA | Mr Mzetywa Ngwenya Director | +27 (0)82 539 0911 |
| FRESH MAP FARM DEVELOPMENT PROPOSALS and FARM ASSESSMENT | Appointed Mentor North West GVT: SCHAAPSKRAAL FARM: BOJANALA | Mr Bigman Maloa Director | +27 (0)82 887 4422 |
| GOBENG Consulting FARM DEVELOPMENT PROPOSALS and FARM ASSESSMENT | Farm Development Proposals | Mr. Baile Mtloane CEO GOBENG Consulting | +27 (0)825331610 |
| PEROZZ CONSULTING ENGINEERS | BOREHOLES SITING FOR NKANGALA DISTRICT (100 Boreholes) | Mr S Bizure Engineer Perozz | +27 (0)13 755 4026 |
| INGCWETI CONSULTANTS | MBALIYEZWE IRRIGATION DESIGNS (190HA Irrigation) | Ms Thobekile Dlamini Engineers INGCWETI | +27 (0)31 569 1818 |



Luriware (Pty) LTD
ANNEXURE D – BANKING DETAILS

| | | |
|----------------|---|-----------------------------|
| Bank | : | ABSA Bank |
| Branch | : | Silverton Branch (Pretoria) |
| Branch Code | : | 632005 |
| Account Number | : | 9288508271 |
| Account Name | : | Luriware (Pty) LTD |
| Account Type | : | Savings Account |



ANNEXURE E – COMMUNITY DEVELOPMENT ACTIVITIES

| ITEM | STAKEHOLDER | EVENT | CONTRIBUTION |
|------|---|--|--|
| 1 | South African Institute of Agricultural Engineers (SAIAE) | Symposium and Biennial CPD Event 3-7 November 2014 | EVENT MAJOR SPONSOR www.saiiae.co.za |
| 2 | Students: Selected Pretoria School | Matric Students Engineering Presentations Competition 2015 | EVENT SPONSSOR |
| 3 | Student from Pretoria (1 students) | Presentation and attendance of the Engineers Event | EVENT SPONSOR |
| 4 | ECSA CANDIDATE ENGINEERS | Junior Candidate Engineers Mentorship Programme | Mentor ECSA CU2014014A |
| 5 | RURAL FARMERS | Farm Infrastructure Planning Assistance to Rural Community Farmers | Mentor and Technical Consultant Training Courses in Principles of Rural Farm Infrastructure Development |



ANNEXURE F – DESIGN SHOWCASE SAMPLE WORKS COMPLETED



Figure 1 Design sketch showcase

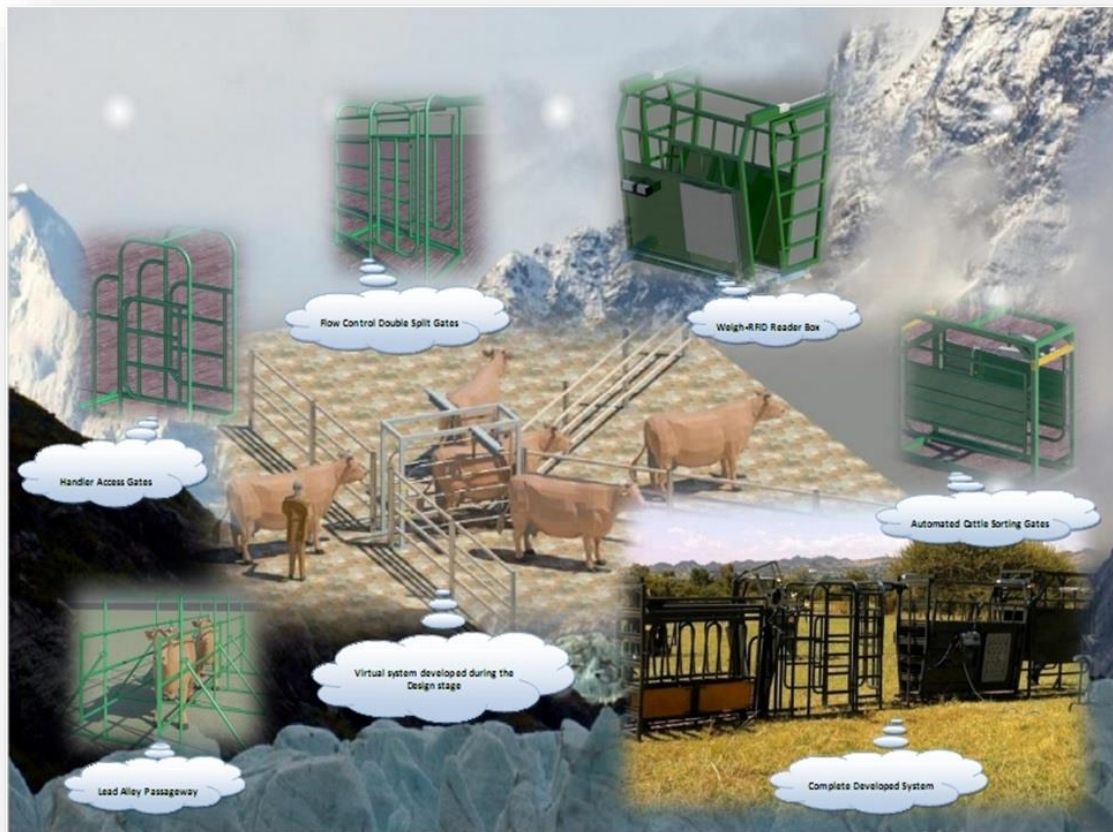


Figure 2 Virtual design prototypes and constructed infrastructure



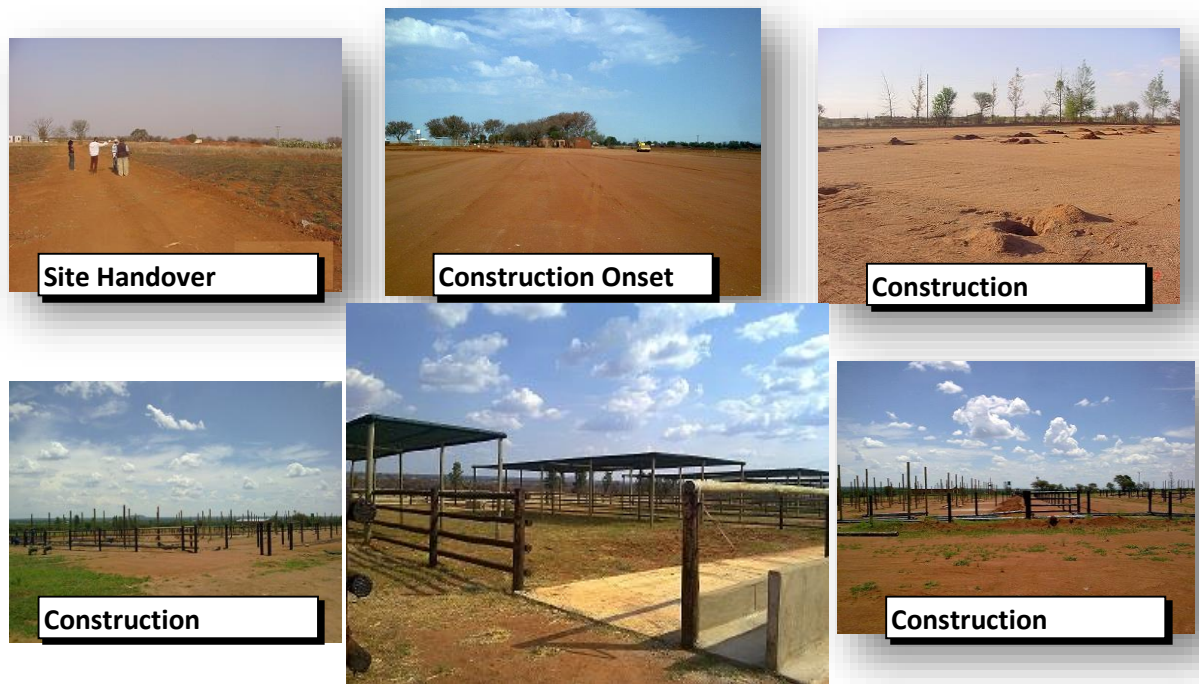


Figure 3 Feedlot project in pictures

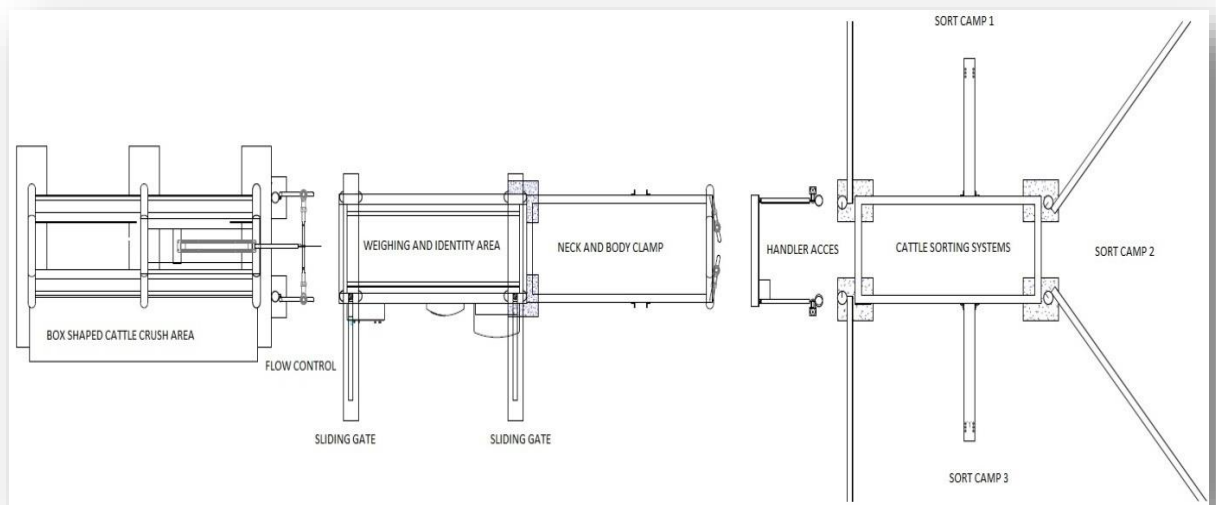


Figure 4 Layout facilities design



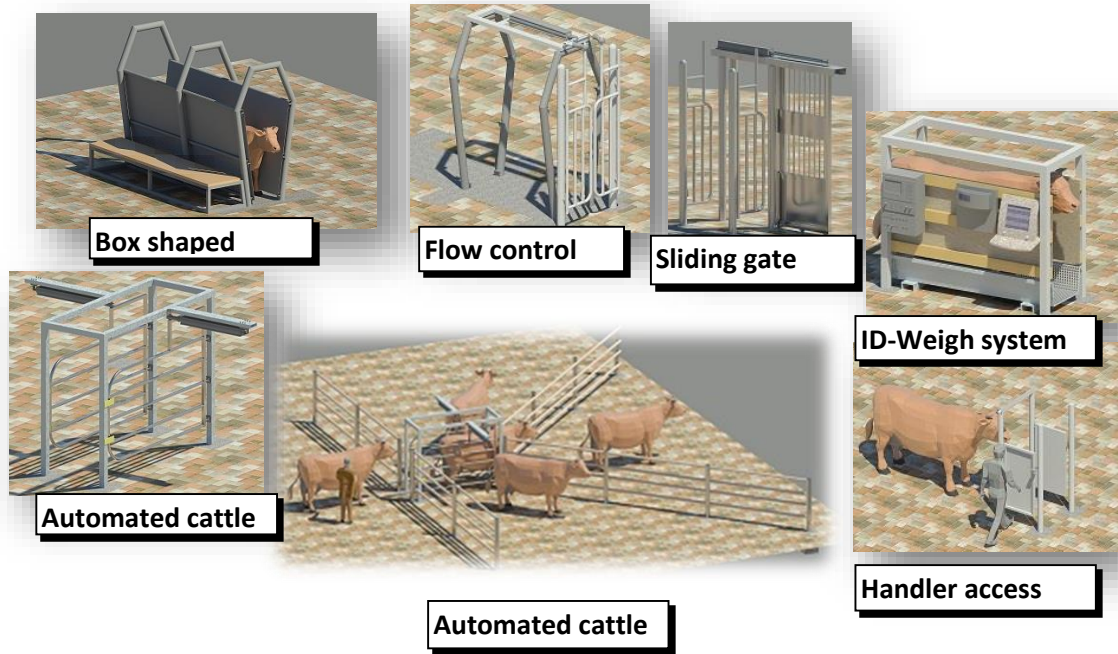


Figure 5 RFID Cattle facility prototype design



Figure 6 Constructed prototype



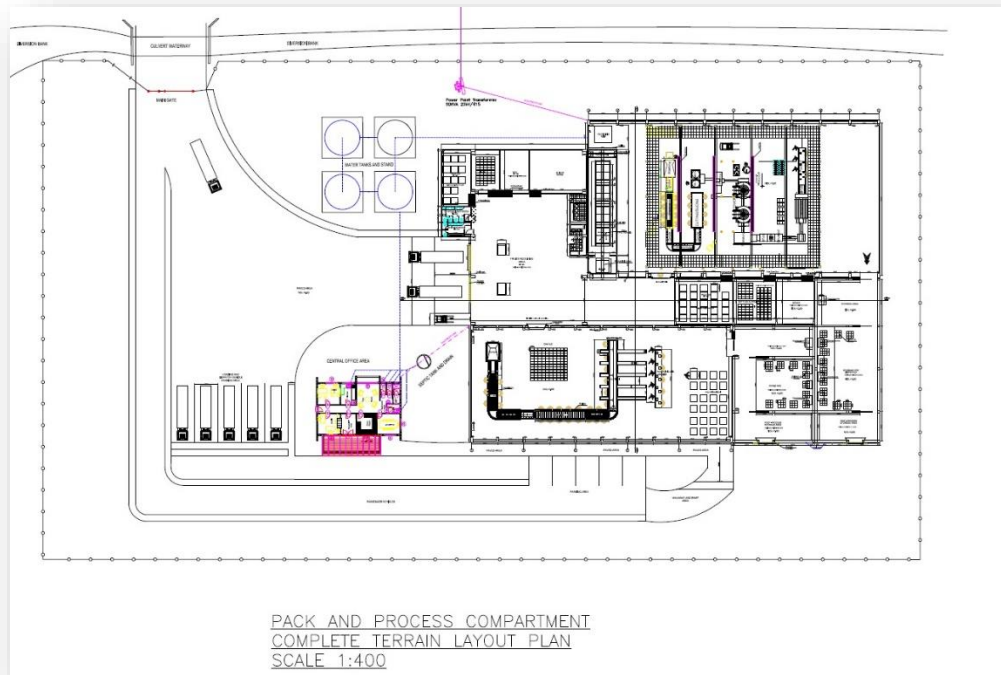


Figure 7 Processing and Packhouse (Luscious Plant)

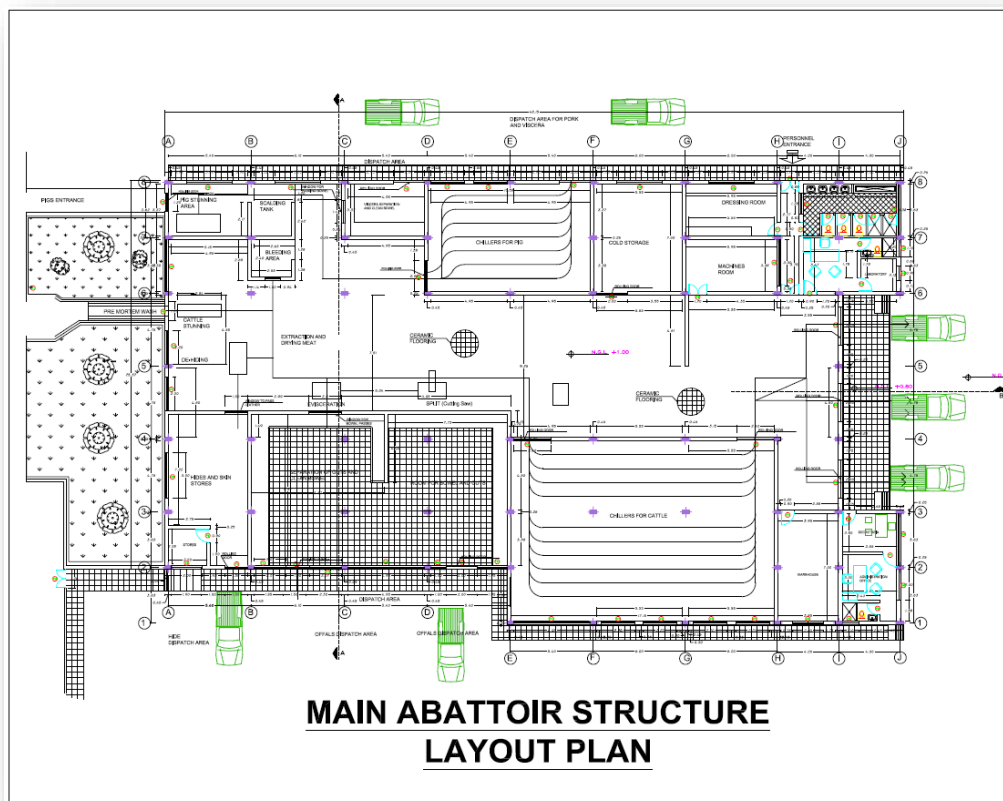


Figure 8 Red Meat Abattoir Design



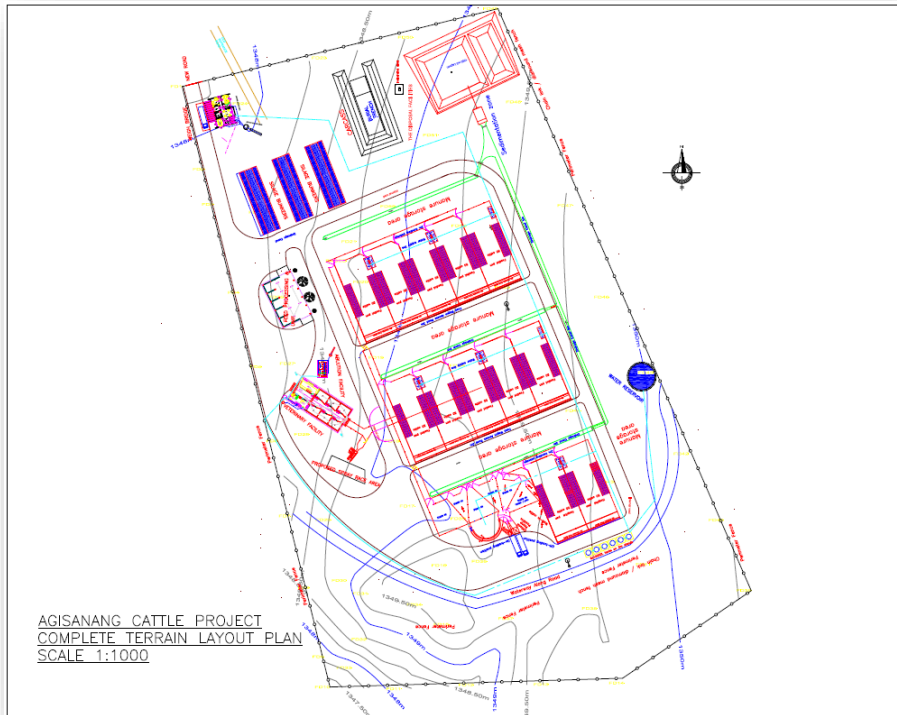


Figure 9 Comprehensive Cattle Feedlot Design

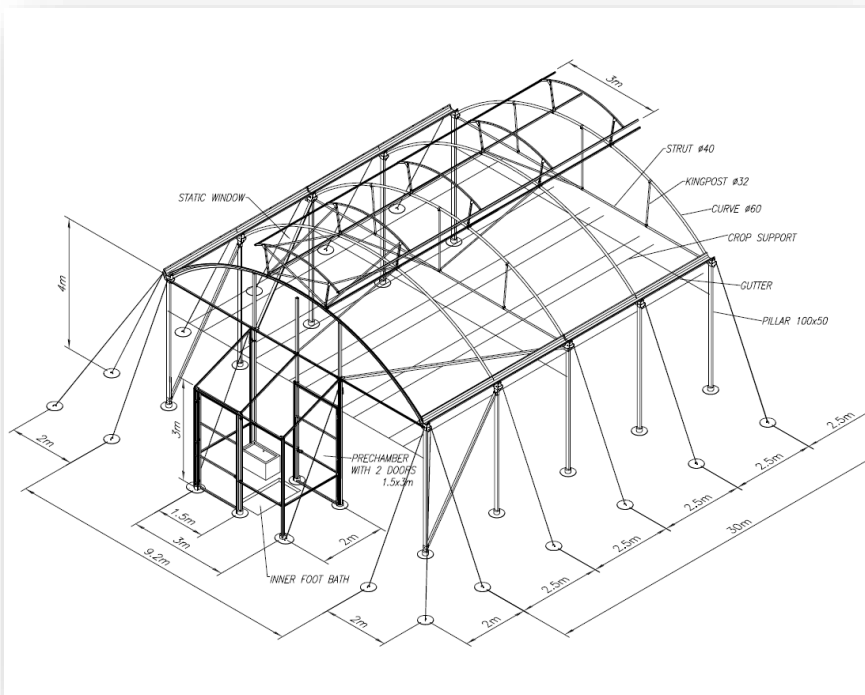


Figure 10 Greenhouse/Tunnels and Hydroponics Structure



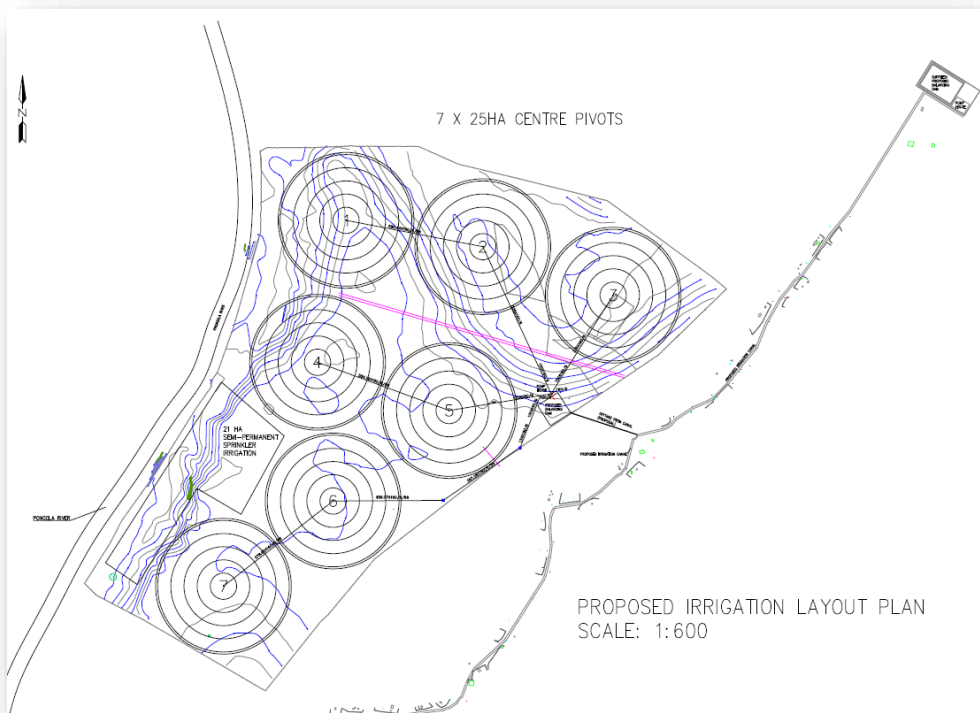


Figure 11 MBALIYEZWE Irrigation Layout Plan

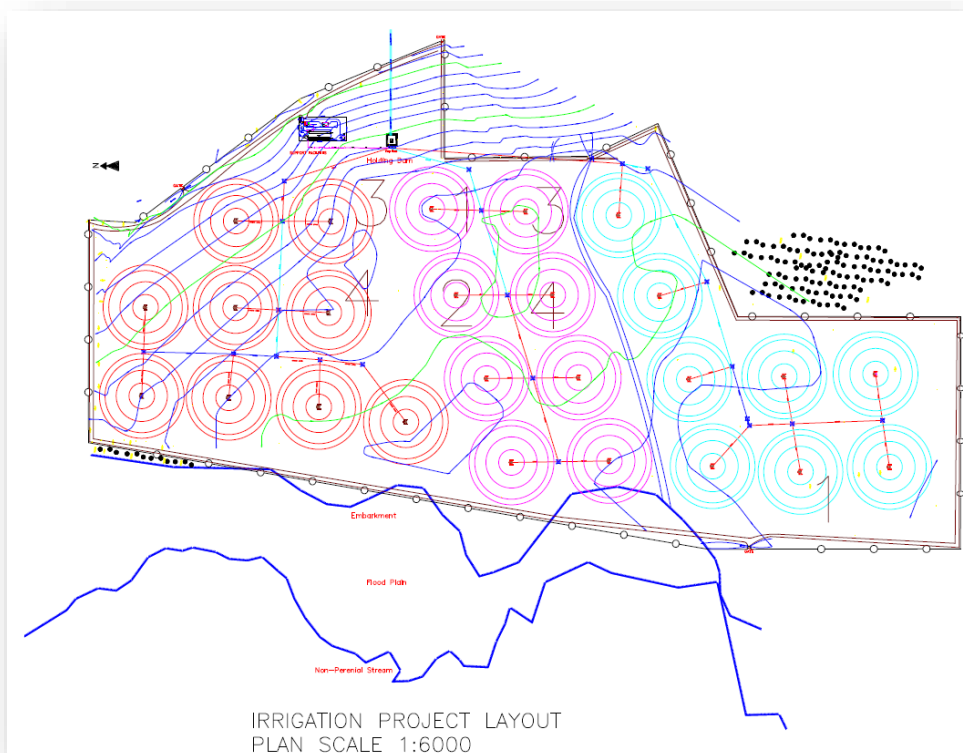


Figure 12 MOKGARENG Irrigation Project



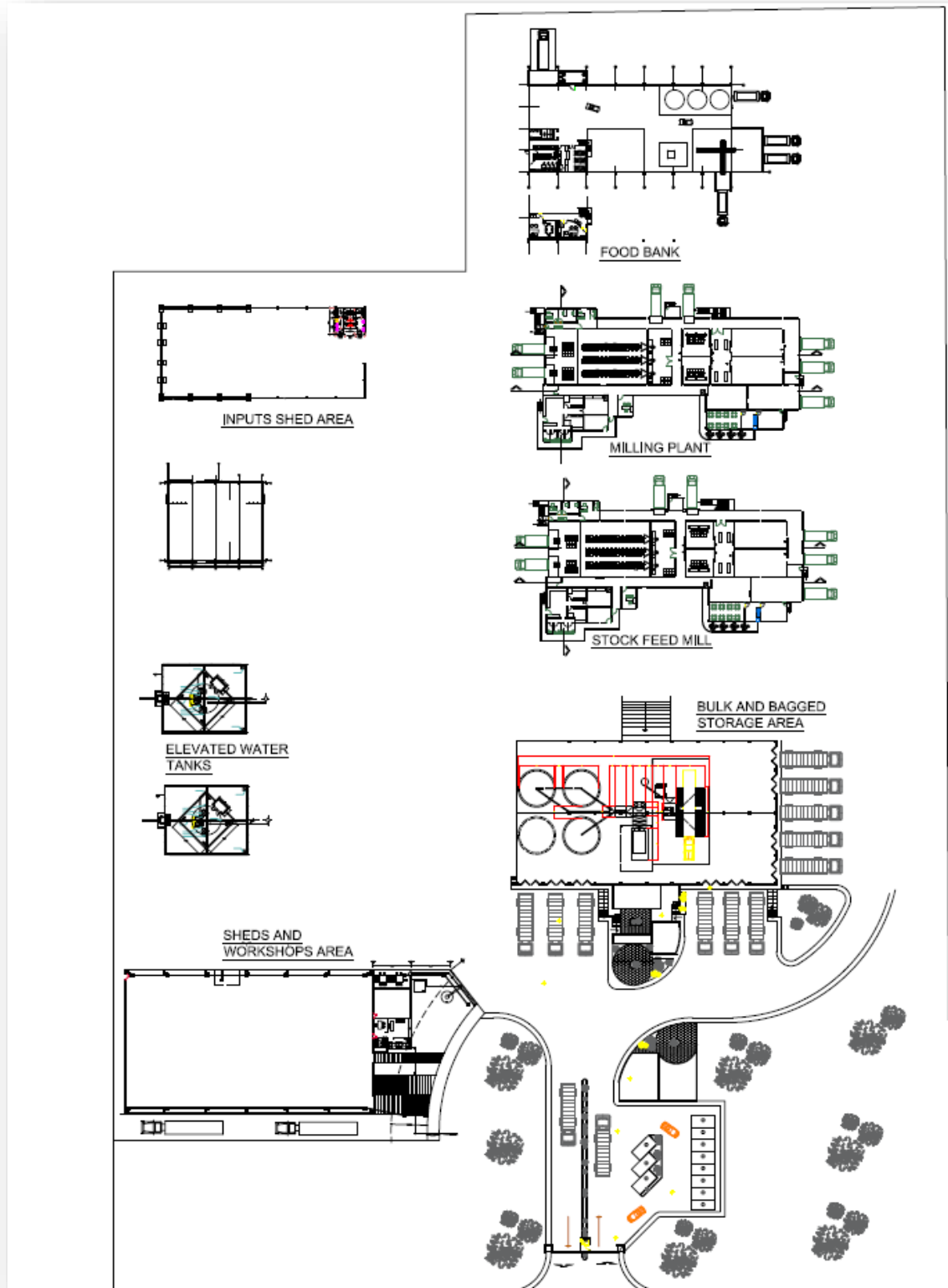


Figure 13 AGRIPARK Conceptual Plan





Figure 14 Mentorship and Training



Figure 15 Mentorship and training





Figure 16 Student Agricultural Engineering presentations mentorship

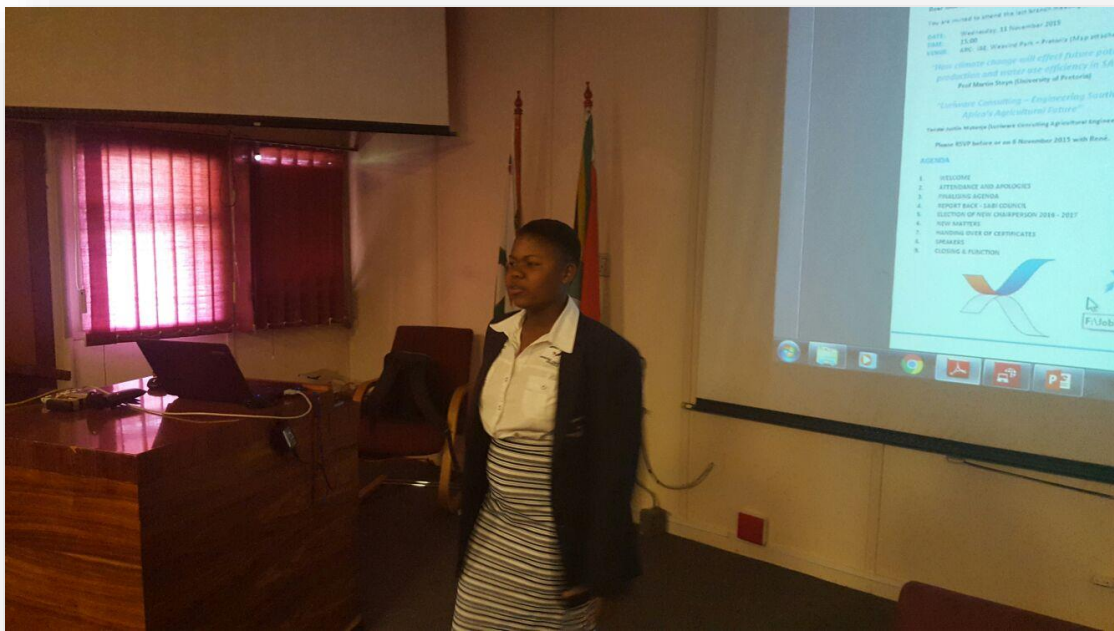


Figure 17 Student Agricultural Engineering presentations mentorship



DETAILS OF BOREHOLE CONSTRUCTION

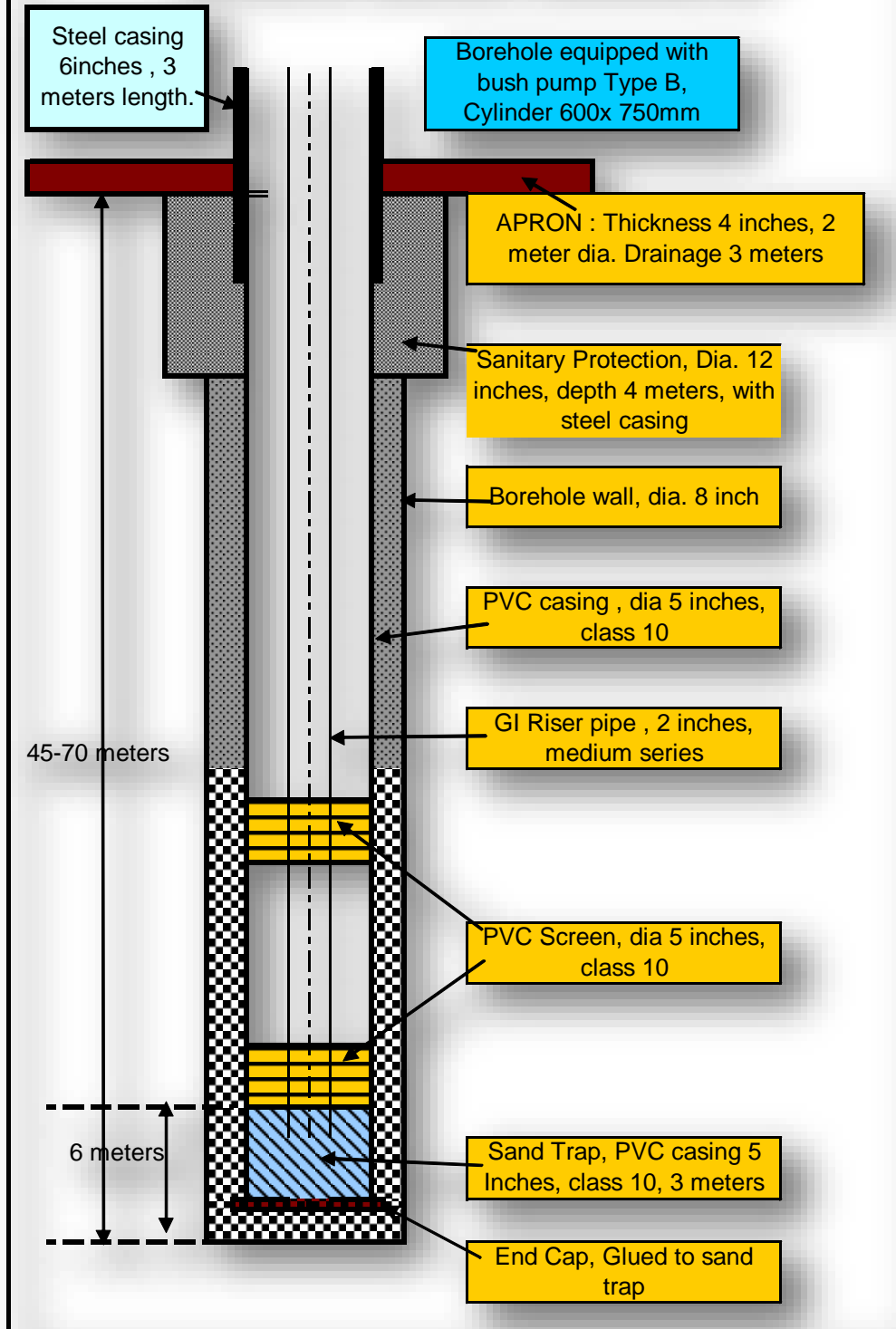


Figure 18 Boreholes Development



Table 1 LITHO Boreholes Testing

| Litho log and drill time log with water strike zones | | | | | | | | | | | | |
|--|----------------------------|----------------|-----------------------------|--|----------------|---|---|---|----|----|----|----|
| Drilling Company: | | | | | | | | | | | | |
| District | | | | | Borehole no | | | | | | | |
| Location | | | | | Date : | | | | | | | |
| Water strikes | Litho-logical Log | Ground Surface | Depth in Meters | | Drill Time Log | | | | | | | |
| | | | Minutes / per meter drilled | | | | | | | | | |
| | | | 0 | | 2 | 4 | 6 | 8 | 10 | 12 | 14 | 16 |
| | Loose soil | | 5 | | | | | | | | | |
| | Weathered Lime stone | | 10 | | | | | | | | | |
| 1st Strike Little water | | | | | | | | | | | | |
| | Marls | | 15 | | | | | | | | | |
| | Hard Lime stone | | 20 | | | | | | | | | |
| | | | | | | | | | | | | |
| | Limestone | | 25 | | | | | | | | | |
| | | | | | | | | | | | | |
| | Fractured lime stone | | 30 | | | | | | | | | |
| 2nd Strike | | | | | | | | | | | | |
| | Compact Lime stones | | 35 | | | | | | | | | |
| | | | | | | | | | | | | |
| good water bearing 3rd Strike | Highly fractured Limestone | | 40 | | | | | | | | | |
| | | | | | | | | | | | | |
| Hard Limestones | | | | | | | | | | | | |



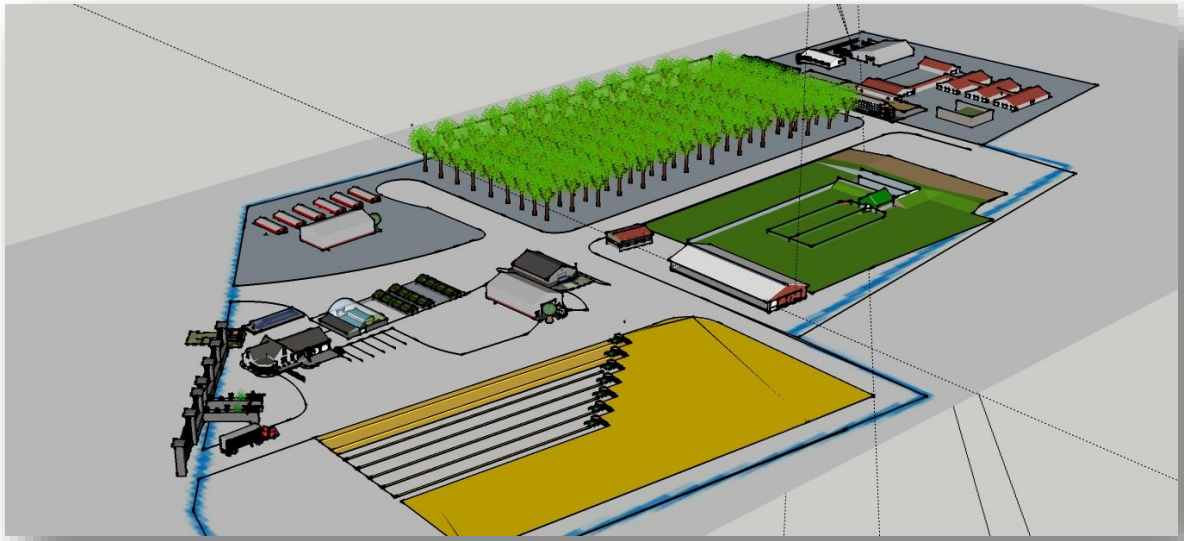


Figure 19 Agri-village Sketch Up for MOLOTE City, Bojanala North West

